



THE CPD STANDARDS OFFICE
CPD PROVIDER: 60065
2025-2026
www.cpdstandards.com

Online

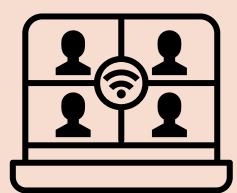
Continued Professional Development provided by The British Institute of Funeral Directors



Wednesday 22nd July 2026



Session starts at 6.30pm



[https://us02web.zoom.us/j/87511406436?
pwd=kNTDrBqX800S11SU6SBRhp1uNaq2ER.1](https://us02web.zoom.us/j/87511406436?pwd=kNTDrBqX800S11SU6SBRhp1uNaq2ER.1)



hayleyowenfd@gmail.com



Amelia from Sylvestris Botanics



**A presentation about
the modern approach to
creating an everlasting
piece of bespoke
artwork with special
blooms.**

**Kaja Pernach founder of Cosmic
Lens Jewellery**

**Cosmic Lens Jewellery was created
to transform those memories into
something you can wear and
treasure every day. Each piece is
carefully handcrafted using the
inclusions that matter most to you,
whether that is breastmilk, hair,
ashes, or fur. These elements are
preserved in resin and set into
elegant jewellery, creating a
keepsake that holds your story.**

**Cosmic Lens Jewellery was born from a simple
belief: the most meaningful moments in life
deserve to be remembered in a beautiful,
lasting way.**

